

## How to generate hardware license key of your PC

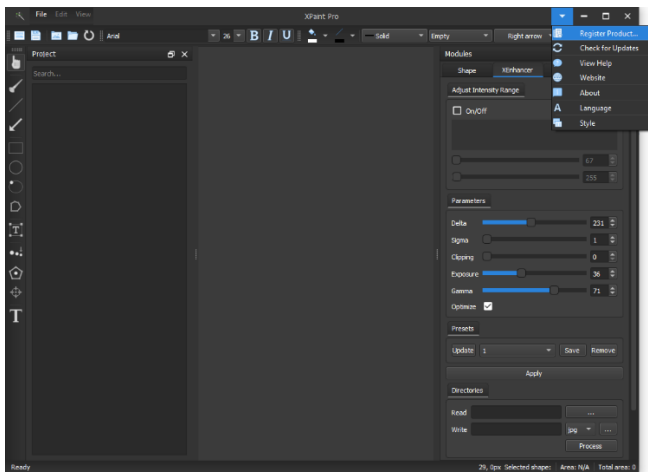
1. Download the demo version of **XPaint Pro** from the following link:

<https://xray-lab.com/software-download/>

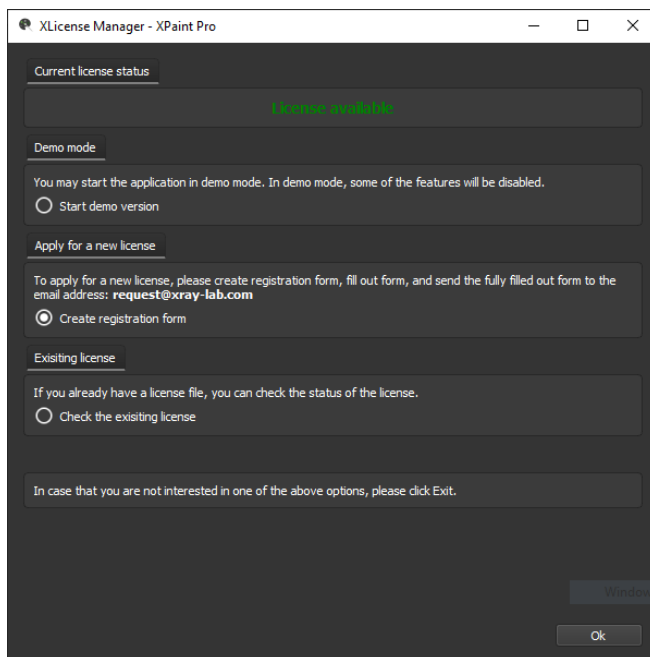
or via direct download link

[https://xray-lab.com/xpaint/download/files/XPaintPro\\_win64-x64.msi](https://xray-lab.com/xpaint/download/files/XPaintPro_win64-x64.msi)

2. Run XPaint Pro
3. Go to **XPaint Pro->Top Right Corner Drop Down Menu->**



4. Click on **“Register Product...”**->



5. Check the second option **“Create registration form”**->Press **“Ok”**->

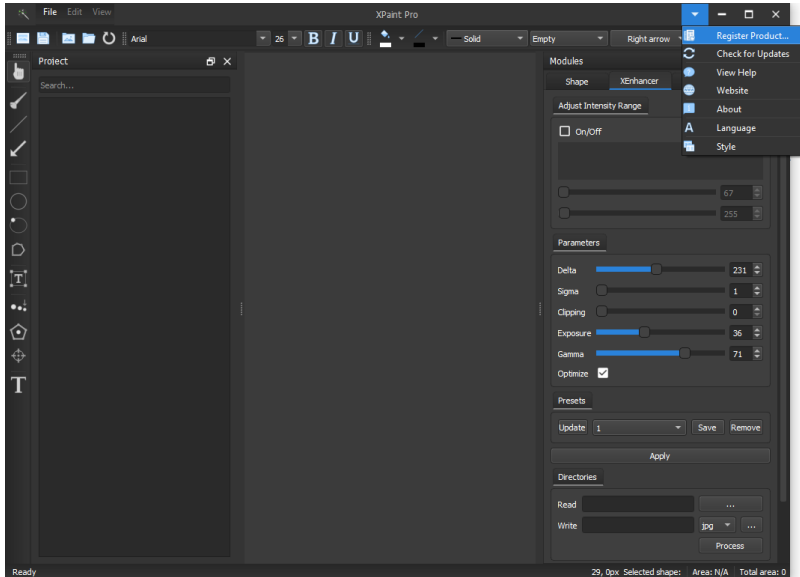
The screenshot shows a window titled "XLicense Manager - XPaint Pro". It contains an "Information" section with a message: "You need a license file to be able to use the disabled features of the software. You can request this license by filling out the following form and email the saved file to us. With the information you give us we will generate the license file which we will send to you via email." Below this is a section for "Required fields" with input boxes for "Full name", "Date" (set to 05/08/2020), "Company", "Address", "Email", and "Phone". A "Hardware key" section displays a long alphanumeric string. At the bottom, there is a "Comments" text area and three buttons: "Go back", "Save", and "Send by email".

6. Fill the form
7. Press **“Save”** to save the hardware key (\*.dat) file to the disk. Send the saved file via email to us at [request@xray-lab.com](mailto:request@xray-lab.com).

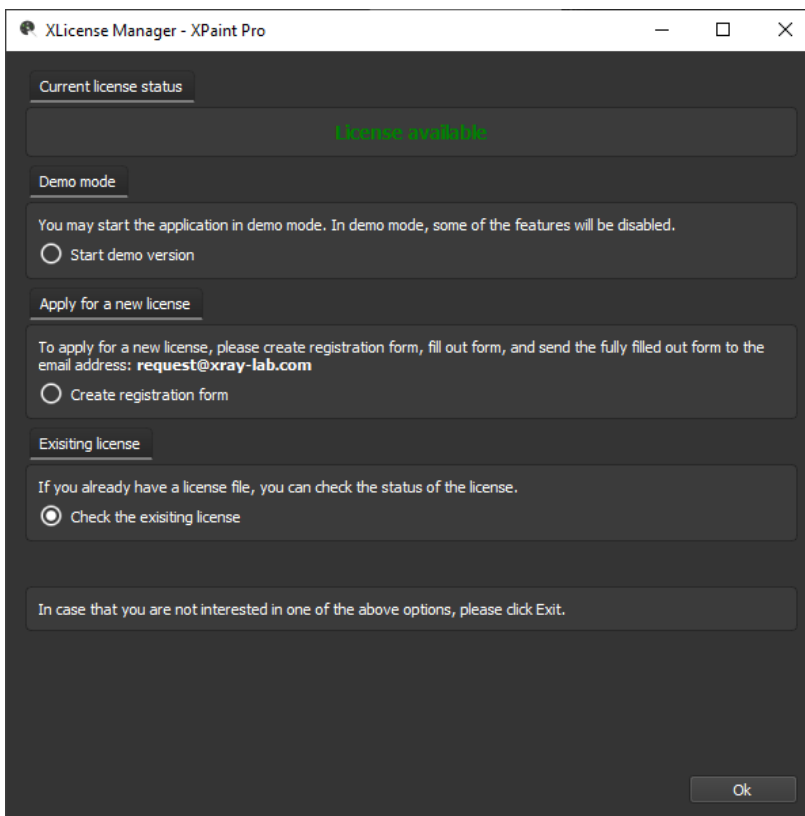
*Note:* If you click **“Send by email”** then please first attach the saved \*.dat file with the email.

## How to apply hardware license key to activate the full version

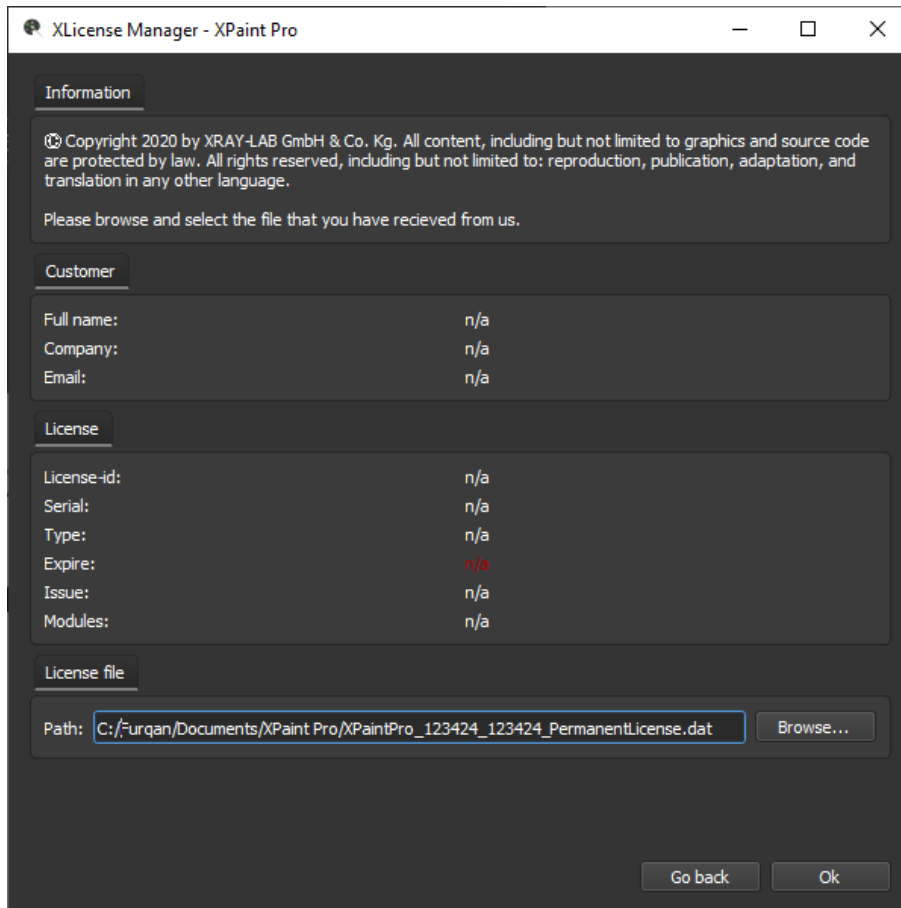
1. Run XPaint Pro
2. Go to **XPaint Pro**->Top right corner drop-down menu button->



3. Click on “**Register Product...**”->



4. Check the third option “**Check the existing license**”->Press “**Ok**”->



5. Click on "**Browse...**" to select the license file that you have received from us and press "**Ok**" from the file dialog.

Wait for 2 seconds, the license information will be displayed in "Customer" and "License" sections.

6. Press "**Go back**" to check the status of the license which should be in green color.
7. Close the dialog and start using full version of the software